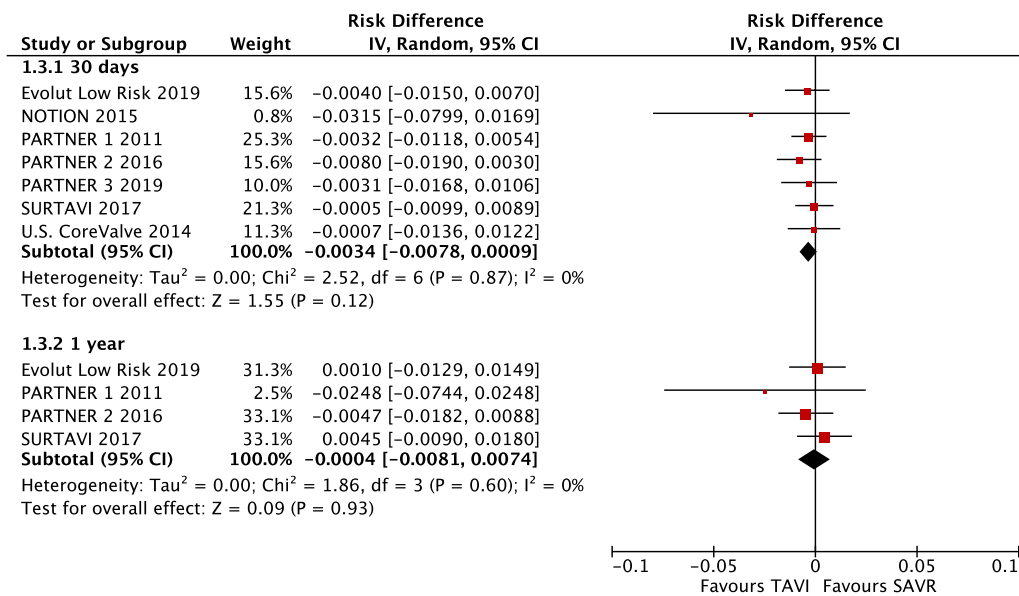
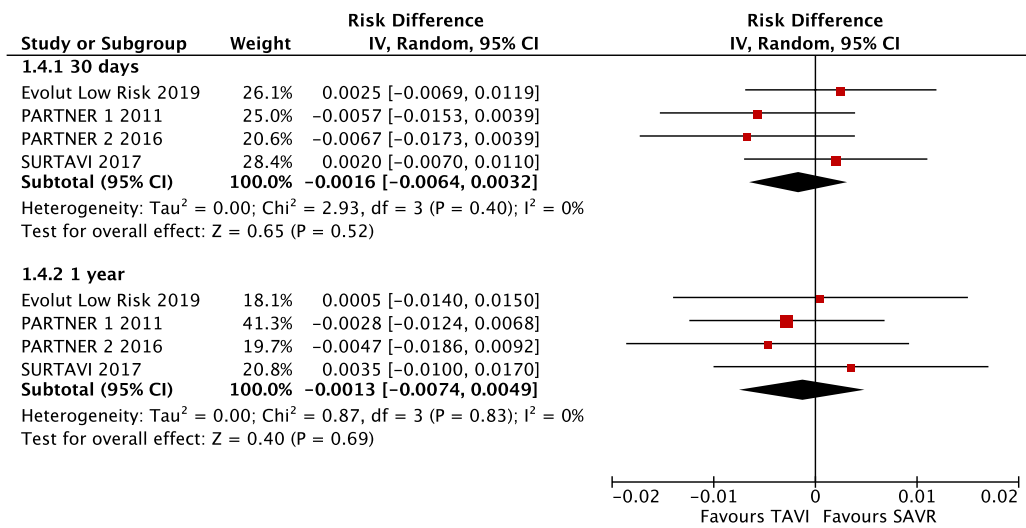


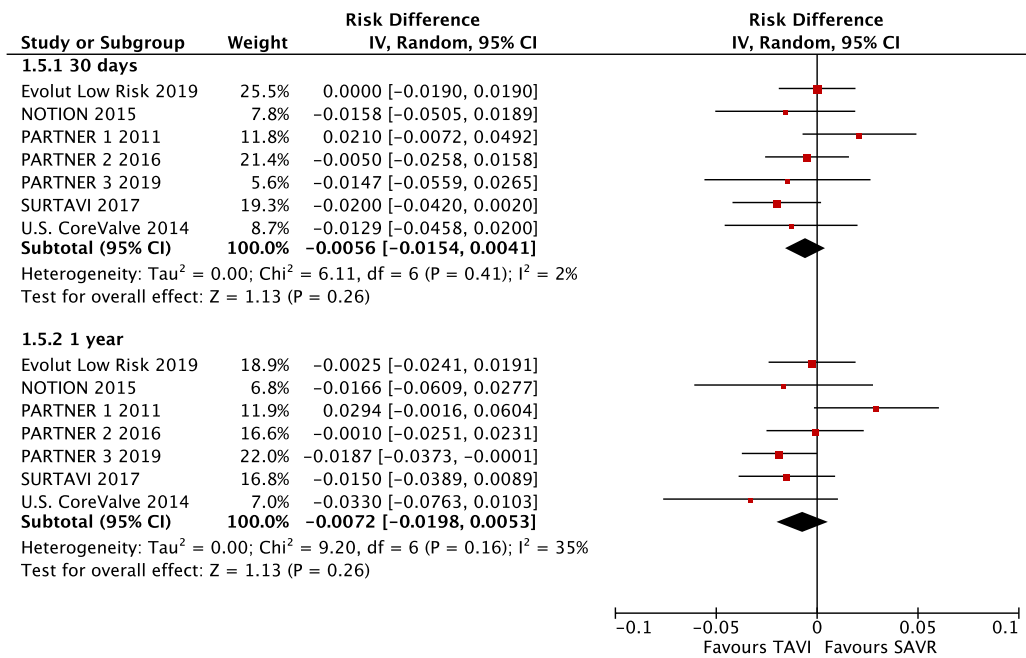
Supplementary Fig. S1 Forrest plot of the sensitivity analysis (intention-to-treat population) of the primary end-point: risk differences in 30-day and 1-year all-cause mortality between transcatheter aortic valve implantation (TAVI) and surgical aortic valve replacement (SAVR). *CI* confidence interval; *IV* inverse variance; *NOTION* Nordic Aortic Valve Intervention; *PARTNER* Placement of Aortic Transcatheter Valves; *SURTAVI* Surgical Replacement and Transcatheter Aortic Valve Implantation



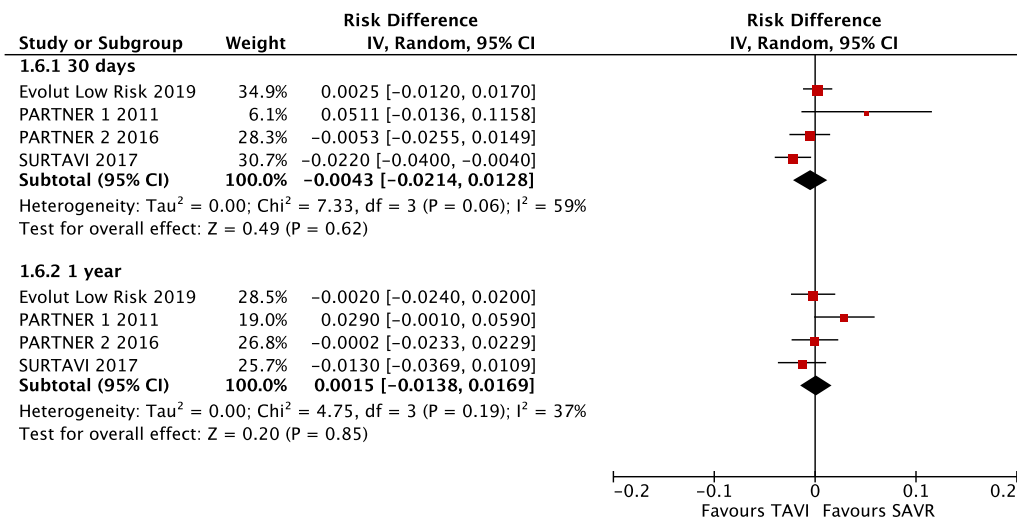
Supplementary Fig. S2 Forrest plot of the principal analysis (as-treated population) of the secondary end-point: risk differences in 30-day and 1-year myocardial infarction between transcatheter aortic valve implantation (TAVI) and surgical aortic valve replacement (SAVR). *CI* confidence interval; *IV* inverse variance; *NOTION* Nordic Aortic Valve Intervention; *PARTNER* Placement of Aortic Transcatheter Valves; *SURTAVI* Surgical Replacement and Transcatheter Aortic Valve Implantation



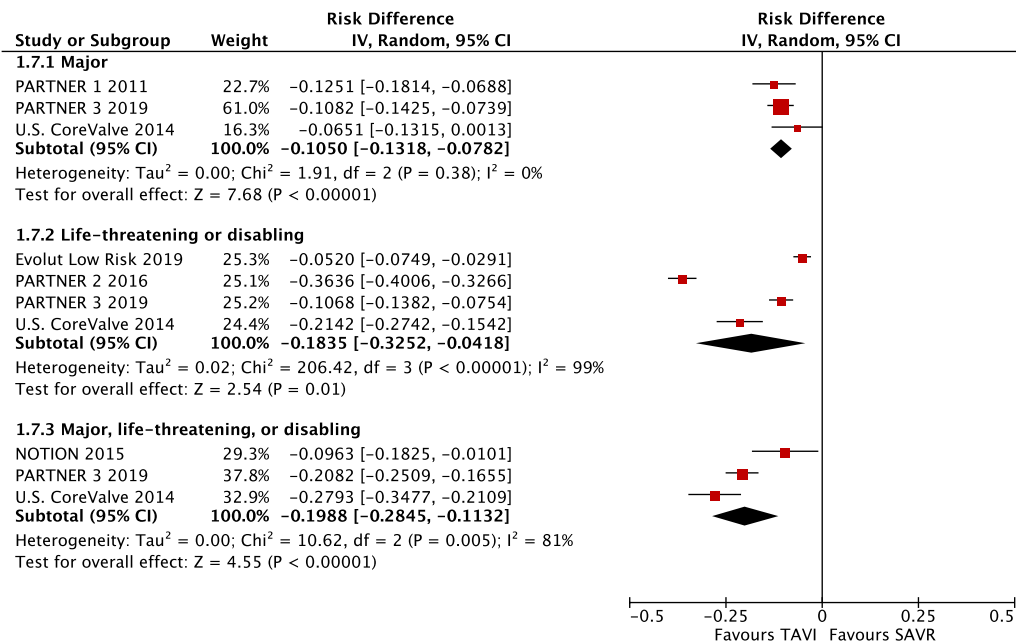
Supplementary Fig. S3 Forrest plot of the sensitivity analysis (intention-to-treat population) of the secondary end-point: risk differences in 30-day and 1-year myocardial infarction between transcatheter aortic valve implantation (TAVI) and surgical aortic valve replacement (SAVR). *CI* confidence interval; *IV* inverse variance; *PARTNER* Placement of Aortic Transcatheter Valves; *SURTAVI* Surgical Replacement and Transcatheter Aortic Valve Implantation



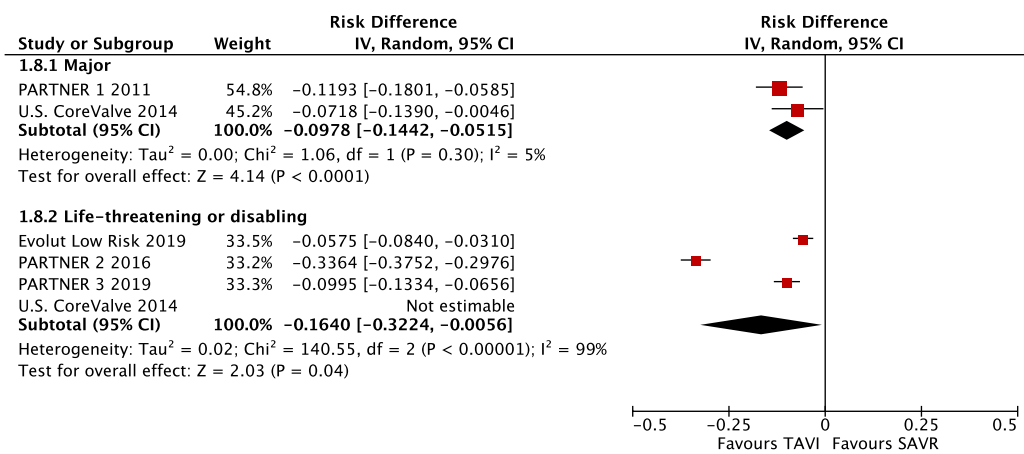
Supplementary Fig. S4 Forrest plot of the principal analysis (as-treated population) of the secondary end-point: risk differences in 30-day and 1-year stroke between transcatheter aortic valve implantation (TAVI) and surgical aortic valve replacement (SAVR). *CI* confidence interval; *IV* inverse variance; *NOTION* Nordic Aortic Valve Intervention; *PARTNER* Placement of Aortic Transcatheter Valves; *SURTAVI* Surgical Replacement and Transcatheter Aortic Valve Implantation



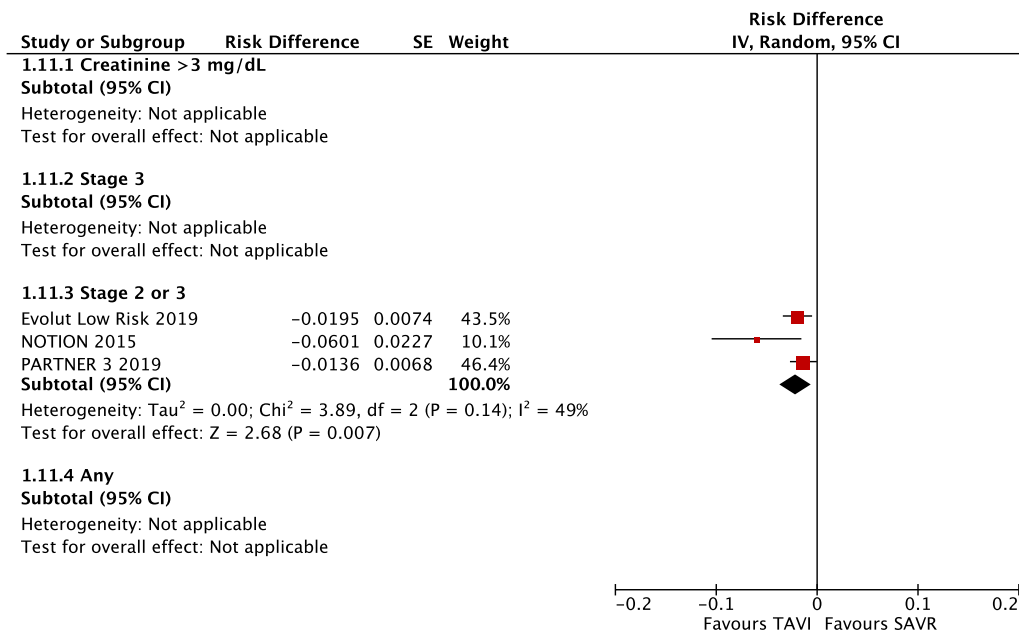
Supplementary Fig. S5 Forrest plot of the sensitivity analysis (intention-to-treat population) of the secondary end-point: risk differences in 30-day and 1-year stroke between transcatheter aortic valve implantation (TAVI) and surgical aortic valve replacement (SAVR). *CI* confidence interval; *IV* inverse variance; *NOTION* Nordic Aortic Valve Intervention; *PARTNER* Placement of Aortic Transcatheter Valves; *SURTAVI* Surgical Replacement and Transcatheter Aortic Valve Implantation



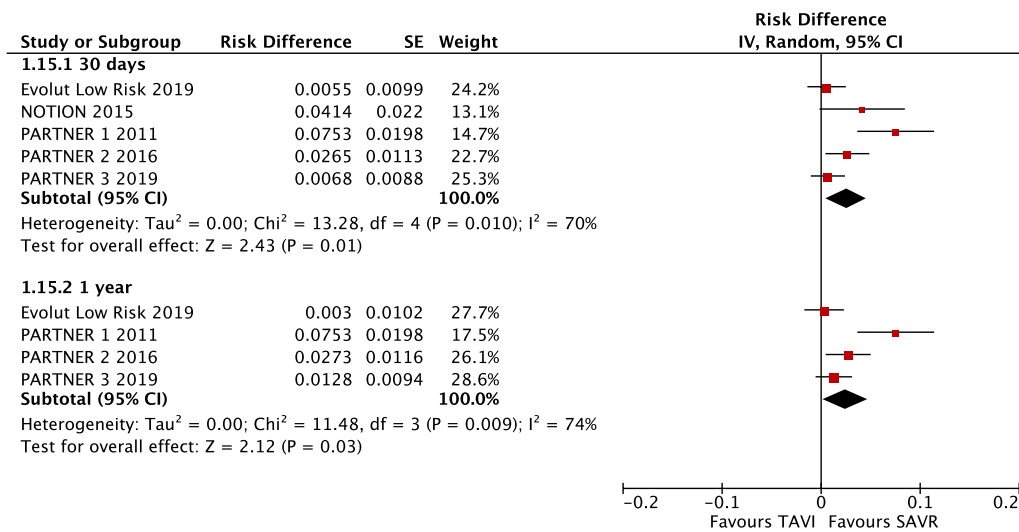
Supplementary Fig. S6 Forrest plot of the principal analysis (as-treated population) of the secondary end-point: risk differences in 30-day bleeding complications between transcatheter aortic valve implantation (TAVI) and surgical aortic valve replacement (SAVR). *CI* confidence interval; *IV* inverse variance; *NOTION* Nordic Aortic Valve Intervention; *PARTNER* Placement of Aortic Transcatheter Valves



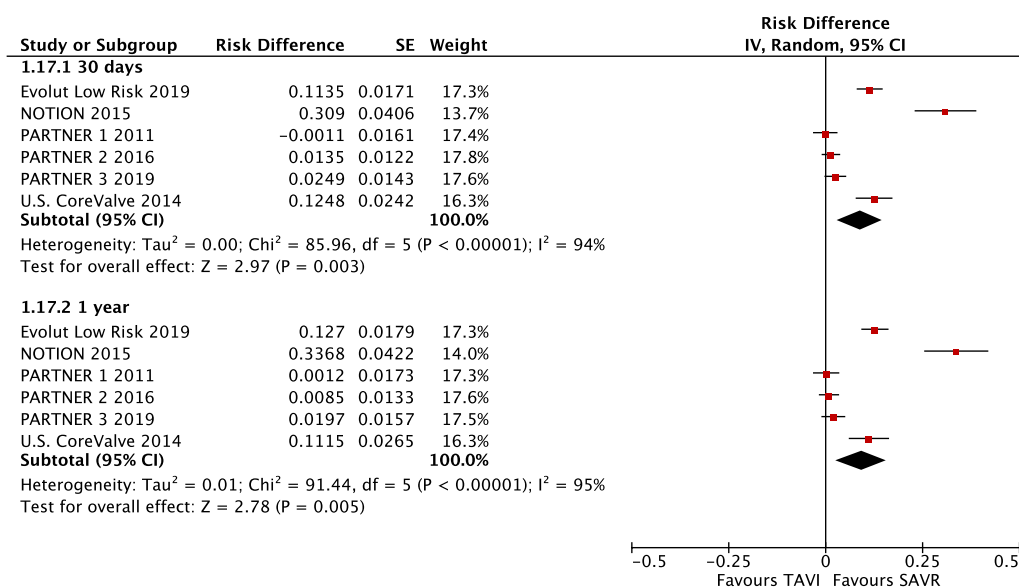
Supplementary Fig. S7 Forrest plot of the principal analysis (as-treated population) of the secondary end-point: risk differences in 1-year bleeding complications between transcatheter aortic valve implantation (TAVI) and surgical aortic valve replacement (SAVR). *CI* confidence interval; *IV* inverse variance; *NOTION* Nordic Aortic Valve Intervention; *PARTNER* Placement of Aortic Transcatheter Valves; *SURTA* Surgical Replacement and Transcatheter Aortic Valve Implantation



Supplementary Fig. S8 Forrest plot of the principal analysis (as-treated population) of the secondary end-point: risk differences in 30-day acute kidney injury between transcatheter aortic valve implantation (TAVI) and surgical aortic valve replacement (SAVR). *CI* confidence interval; *IV* inverse variance; *NOTION* Nordic Aortic Valve Intervention; *PARTNER* Placement of Aortic Transcatheter Valves; *SURTAVI* Surgical Replacement and Transcatheter Aortic Valve Implantation



Supplementary Fig. S9 Forrest plot of the principal analysis (as-treated population) of the secondary end-point: risk differences in 30-day and 1-year major vascular complications between transcatheter aortic valve implantation (TAVI) and surgical aortic valve replacement (SAVR). *CI* confidence interval; *IV* inverse variance; *NOTION* Nordic Aortic Valve Intervention; *PARTNER* Placement of Aortic Transcatheter Valves; *SURTAVI* Surgical Replacement and Transcatheter Aortic Valve Implantation



Supplementary Fig. S10 Forrest plot of the principal analysis (as-treated population) of the secondary end-point: risk differences in 30-day and 1-year new permanent pacemaker implantation between transcatheter aortic valve implantation (TAVI) and surgical aortic valve replacement (SAVR). *CI* confidence interval; *IV* inverse variance; *NOTION* Nordic Aortic Valve Intervention; *PARTNER* Placement of Aortic Transcatheter Valves