

Article: Longitudinal course of health-related quality of life over 10 years in breast cancer patients treated with radiotherapy following breast-conserving surgery

Journal: Quality of Life Research

Authors: Yifeng Gao, Juan Camilo Rosas Romero, Hanna Fink, Sabine Behrens, Jenny Chang-Claude, Petra Seibold

***Corresponding author:**

Dr. Petra Seibold

Division of Cancer Epidemiology

German Cancer Research Center (DKFZ), Im Neuenheimer Feld 581, 69221 Heidelberg, Germany

E-mail: p.seibold@dkfz-heidelberg.de

Section 1. Study cohort characteristics

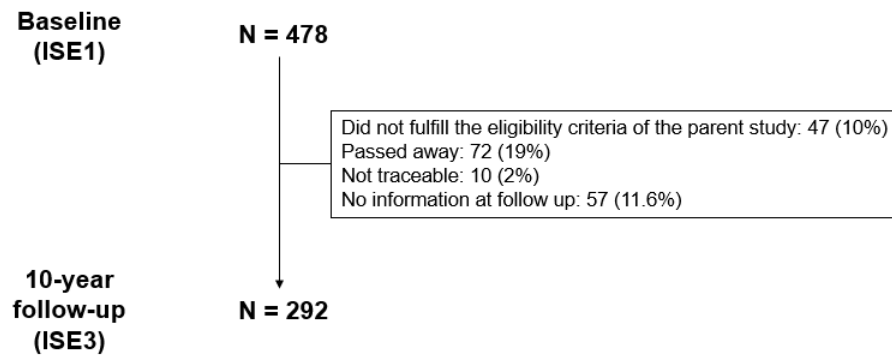


Figure S1. CONSORT diagram of breast cancer patient cohort.

Section 2. Subgroup analysis

(a)

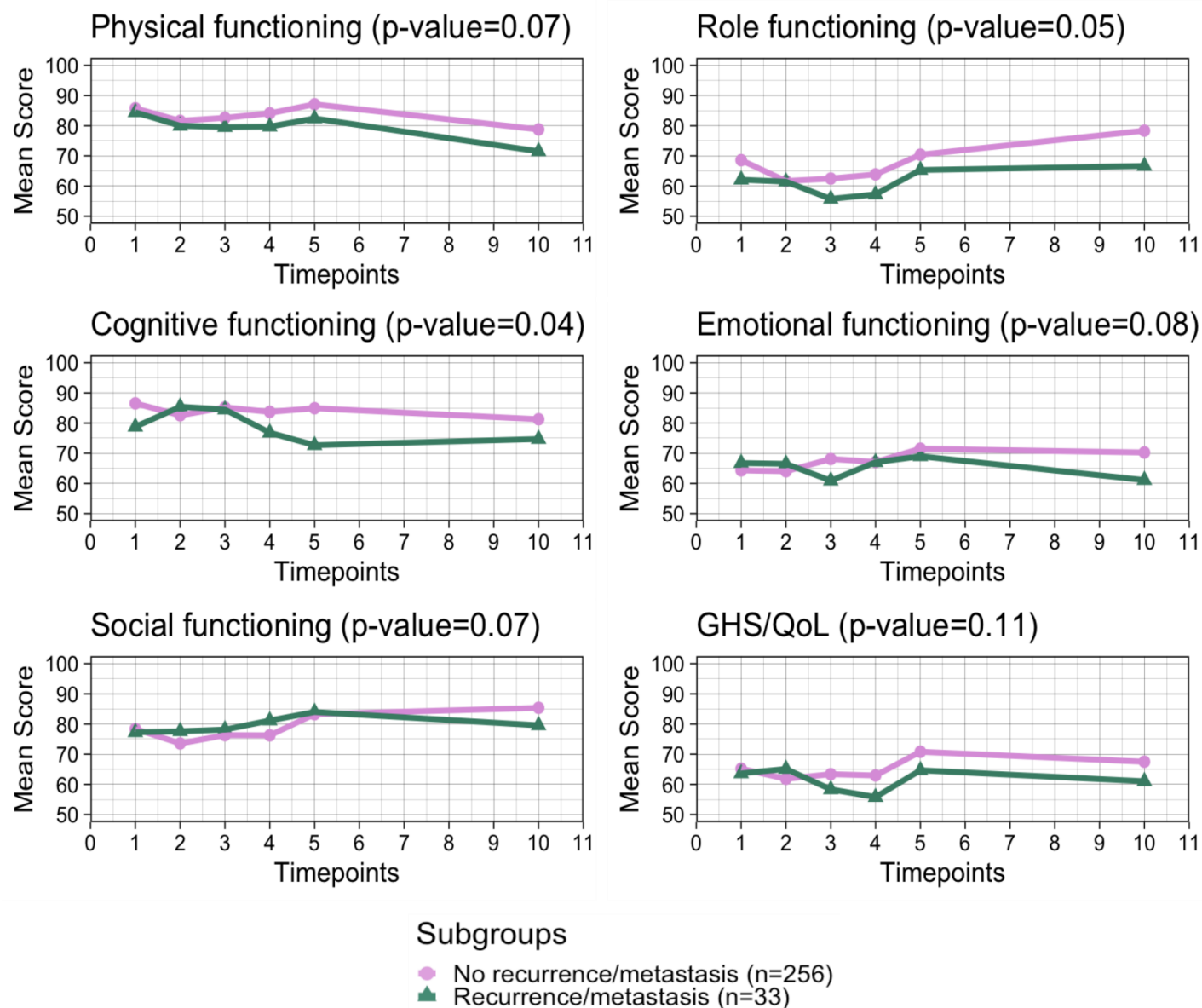


Figure S2. Cont.

(b)

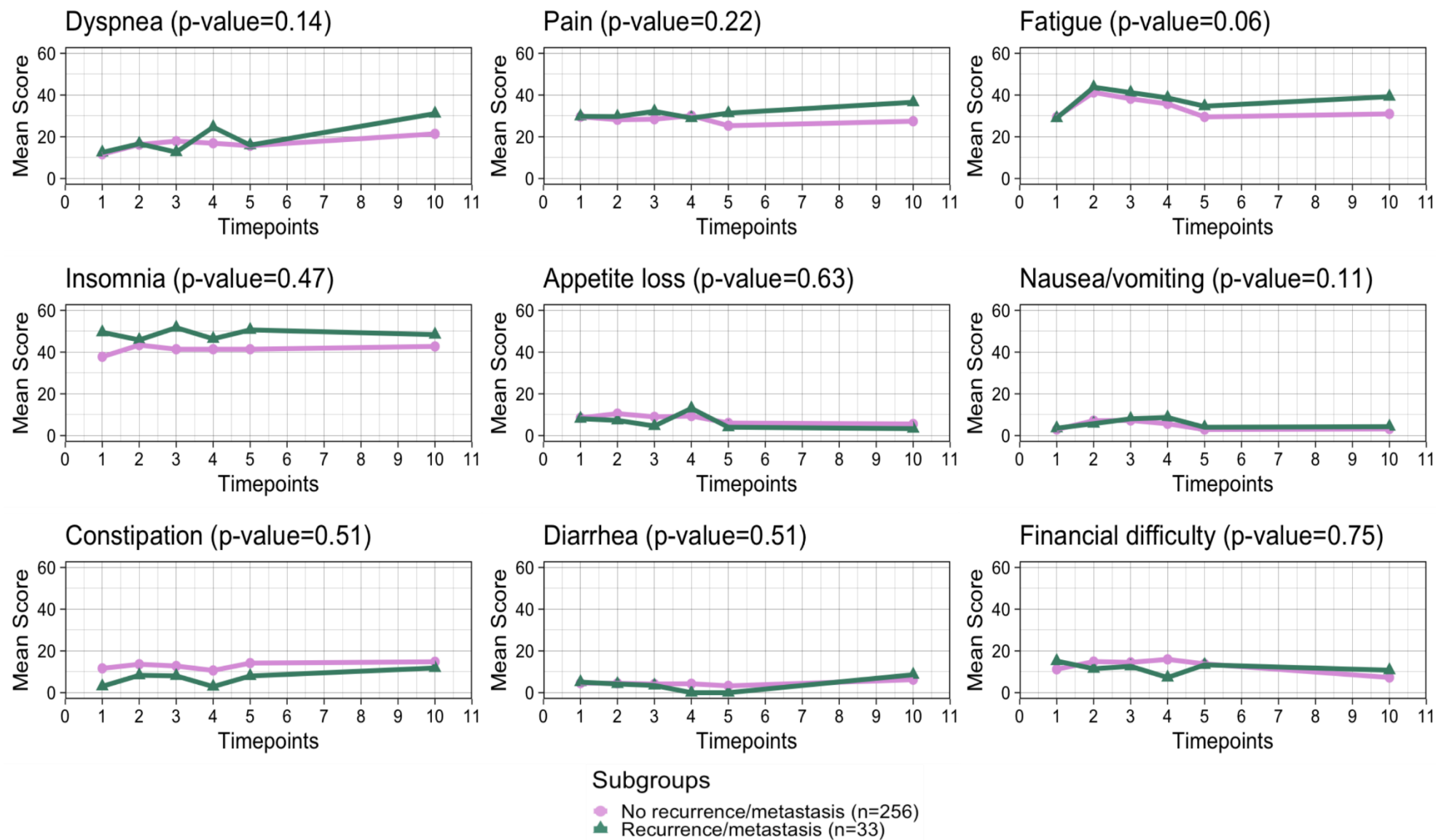


Figure S2. Mean QLQ-C30 scores for (a) Global Health Status/Quality of Life (GHS/QoL), functional and (b) symptom domains from baseline to 10 years after diagnosis by recurrence/metastases status. P-values indicate the heterogeneity at the 10-year time-point. No statistical significance at the previous time-points.

Section 3. Cross-sectional comparison between breast cancer patients and control population

Table S1. Wilcoxon rank-sum test for differences of EORTC QLQ-C30 scores in Global Health Status/Quality of Life (GHS/QoL), functional and symptom scales/items between breast cancer patients and control population at the 10-year follow-up after age-stratification

	Wilcoxon Test for Differences between ISE3 & MARIE Control								
	Age < 65 (N=169)			65 <= Age < 75 (N=956)			Age >= 75 (N=841)		
	means of EORTC QLQ-C30 score		p-value	means of EORTC QLQ-C30 score		p-value	means of EORTC QLQ-C30 score		p-value
	patients (N=69)	controls (N=100)		patients (N=145)	controls (N=811)		patients (N=78)	controls (N=763)	
Global HRQoL									
GHS/QoL	66.30	68.79	0.61	70.36	66.81	0.09	61.22	61.13	0.94
Functional domains									
Physical functioning	81.55	87.13	0.044*	80.34	82.79	0.041*	69.12	71.43	0.34
Role functioning	78.26	86.20	0.034*	79.25	82.46	0.08	72.08	71.75	0.97
Cognitive functioning	80.43	84.17	0.51	82.05	86.70	0.14	77.49	81.04	0.65
Emotional functioning	63.08	74.50	0.008**	71.42	76.97	0.004**	69.70	75.23	0.046*
Social functioning	82.61	87.00	0.14	85.92	85.33	0.74	84.62	81.67	0.61
Symptom domains									
Dyspnea	25.60	18.03	0.026*	20.00	20.02	0.87	23.68	26.02	0.57
Pain	27.54	27.27	0.85	25.41	27.69	0.63	35.04	35.90	0.69
Fatigue	35.51	25.03	0.002**	28.94	26.37	0.018*	35.50	36.07	0.72
Insomnia	50.72	31.97	0.0006***	38.97	35.33	0.014*	46.15	37.54	0.06
Appetite loss	3.43	6.06	0.65	4.43	5.24	0.55	9.09	8.92	0.70
Nausea/vomiting	5.56	6.06	0.61	2.68	3.28	0.93	2.85	3.88	0.92
Constipation	16.91	8.08	0.07	11.74	7.40	0.0001***	18.42	13.99	0.27
Diarrhea	8.70	8.42	0.41	3.76	8.15	0.041*	9.09	7.21	0.36
Financial difficulty	12.08	6.67	0.12	5.13	5.23	0.70	8.23	7.07	0.71

$\alpha=0.05$; * $p<0.05$, ** $p<0.01$, *** $p<0.001$

Abbreviations: GHS/QoL: Global Health Status/Quality of Life

Section 4. Multiple linear regression model

Table S2. Multiple linear regression models on Global Health Status/Quality of Life (GHS/QoL), functional and symptom domains in breast cancer patients at the 10-year follow-up

(a) Functional domains and GHS/QoL (model with best fits)

Covariates	N	Functional domains & GHS/QoL (0 - 100)											
		Physical Functioning (R ² = 14.8)		Role Functioning (R ² = 6.6)		Cognitive Functioning (R ² = 5.4)		Emotional Functioning (R ² = 9.9)		Social Functioning (R ² = 8.5)		GHS/QoL (R ² = 7.9)	
		β	(95% CI)	β	(95% CI)	β	(95% CI)	β	(95% CI)	β	(95% CI)	β	(95% CI)
Age													
< 65	69												
65 - <75	145												
> 75	78												
Living with others	202	8.35	(2.44, 14.25)*										
BMI >= 25 kg/m2	152	-6.33	(-11.94, -0.72)*									-6.46	(-12.2, -0.74)*
Smoking Status													
Never smoked	193			Ref.		Ref.							
Quit smoking	62			0.74	(-8.37, 9.85)	-0.66	(-7.95, 6.62)						
Current smoker	30			9.44	(-1.83, 20.71)	10.17	(0.71, 19.62)*						
Other adjuvant treatments													
Aromatase inhibitors	52	-6.1	(-12.99, 0.81)										
Tamoxifen	219												
Chronic Diseases													
Depression	43	-6.88	(-14.3, 0.54)	-13.67	(-23.28, -4.1)**	-8.92	(-16.84, -0.99)*	-20.28	(-28.82, -11.73)***	-7.95	(-16.82, 0.92)	-11.46	(-18.92, -4.0)**
Hypertension	148	-8.12	(-13.77, -2.5)**	-10.54	(-17.73, -3.34)**			-5.28	(-11.69, 1.14)	-3.95	(-10.47, 2.58)	-6.33	(-12.06, -0.59)**
Stroke	11					-20.97	(-35.43, -6.50)**	-17.83	(-35.65, -0.02)*				
Diabetes	25												
Recurrence, metastases and other tumors	33			-7.43	(-18.33, 3.46)			-3.85	(-13.92, 6.21)	-9.97	(-22.24, 2.3)	-5.57	(-14.1, 2.92)
Other Symptoms													
Pain/Lymphedema	19	-10.29	(-20.3, -0.27)*							-18.1	(-30.87, -5.28)**		
Fibrosis	87									-8.1	(-15.1, -1.13)*		

This table included all covariates after AIC selection; covariates were assessed at the 10-year follow-up; N refers to the overall frequency for every level; *p<0.05, **p<0.01, ***p<0.001

Abbreviations: GHS/QoL: Global Health Status/Quality of Life; BMI: Body mass index

(b) Symptom domains (model with best fits)

Covariates	N	Symptom domains (0-100)																			
		Dyspnea (R ² = 20.2)		Pain (R ² = 5.4)		Fatigue (R ² = 6.5)		Insomnia (R ² = 2.9)		Appetite Loss (R ² = 4.9)		Nausea/Vomiting (R ² = 4.2)		Constipation (R ² = 2.1)		Diarrhea (R ² = -0.1)		Financial Difficulty (R ² = 11.1)			
		β	(95% CI)	β	(95% CI)	β	(95% CI)	β	(95% CI)	β	(95% CI)	β	(95% CI)	β	(95% CI)	β	(95% CI)	β	(95% CI)		
Age																					
< 65	69	Ref.							Ref.												
65 - <75	145	-12.2	(-22.62, -1.79)*						1.29	(-3.29, 5.87)											
> 75	78	-19.5	(-32.6, -6.4)**						6.85	(1.44, 12.25)*											
Living with others	202	-17.1	(-26.72, -7.49)***	-10.7	(-19.73, -1.57)*																
BMI >= 25 kg/m2	152																				
Smoking Status																					
Never smoked	193																				
Quit smoking	62																				
Current smoker	30																				
Other adjuvant treatments																					
Aromatase inhibitors	52	16.43	(5.4, 27.47)**						1.68	(-2.91, 6.27)											
Tamoxifen	219			11.32	(0.16, 22.5)*																
Chronic Diseases																					
Depression	43	7.26	(-4.12, 18.64)	11.3	(0.54, 22.05)*	14.83	(6.13, 23.53)***	16.01	(3.71, 28.30)*	7.83	(2.76, 12.89)***	6.3	(2.68, 9.9)***	11.44	(2.48, 20.41)*			16.35	(10.39, 22.32)***		
Hypertension	148	15.11	(6.26, 23.95)***	6.37	(-1.99, 14.74)	8.44	(1.88, 15.0)*	8.35	(-0.81, 17.51)			1.06	(-1.64, 3.76)					3.27	(-1.18, 7.73)		
Stroke	11	25.18	(1.8, 48.57)*									4.1	(-2.98, 11.13)								
Diabetes	25	18.72	(4.8, 32.64)**															2.88	(-3.79, 9.54)	5.46	(-2.11, 13.07)
Recurrence, metastases and other tumors	33	7.22	(-6.14, 20.59)	6.87	(-5.73, 19.47)	6.95	(-3.1, 17.0)														

This table included all covariates after AIC selection; covariates were assessed at the 10-year follow-up; N refers to the overall frequency for every level; *p<0.05, **p<0.01, ***p<0.001

Abbreviations: BMI: Body mass index