

Supplementary Material

Supplement 1

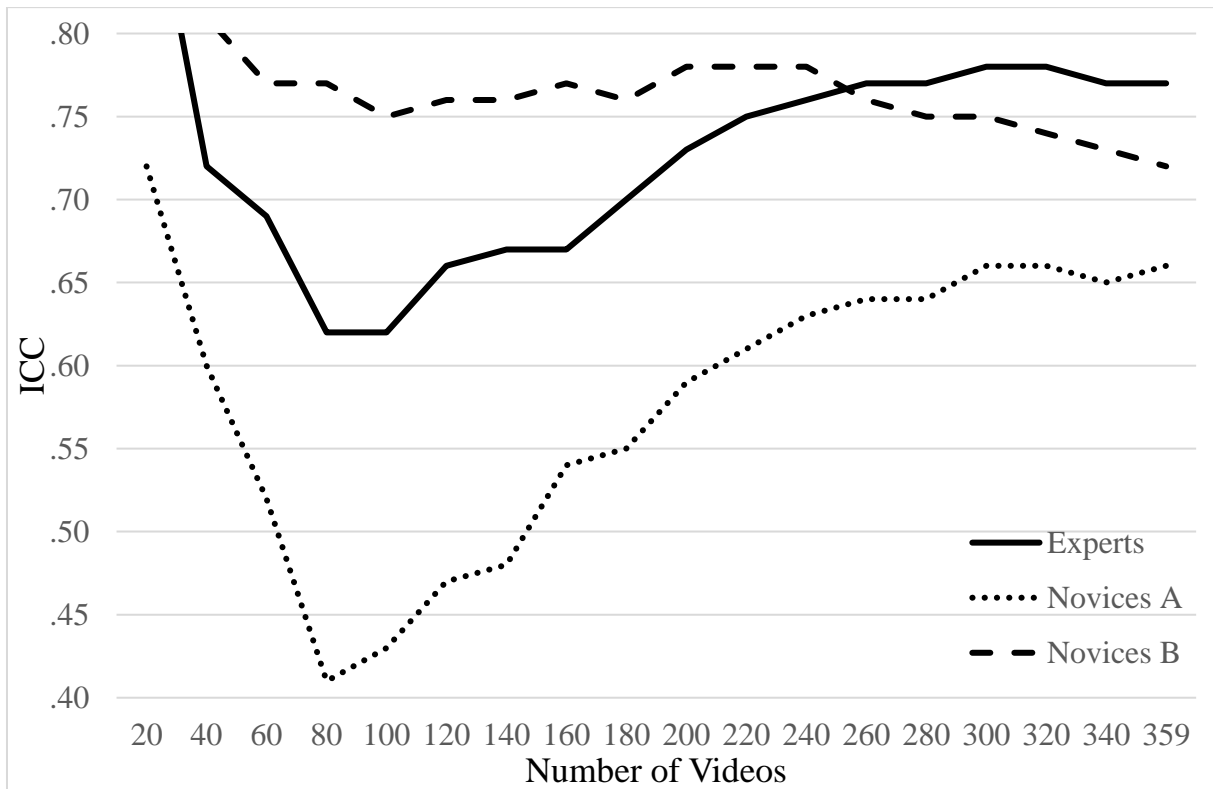
Interrater Reliabilities for the Novice A Dyad Comparing Video Perspectives

	Standard perspective	Three perspectives	<i>z</i>	<i>p</i>
CTS	.79 [.68, .86] <i>n</i> = 179	.76 [.47, .87] <i>n</i> = 176	.70	.241
CCSS-S	.66 [.52, .76] <i>n</i> = 172	.65 [.44, .77] <i>n</i> = 172	.16	.436
HAQ	.74 [.59, .83] <i>n</i> = 179	.75 [.62, .83] <i>n</i> = 176	-.21	.417
ES	.68 [.56, .76] <i>n</i> = 179	.63 [.50, .73] <i>n</i> = 176	.82	.206

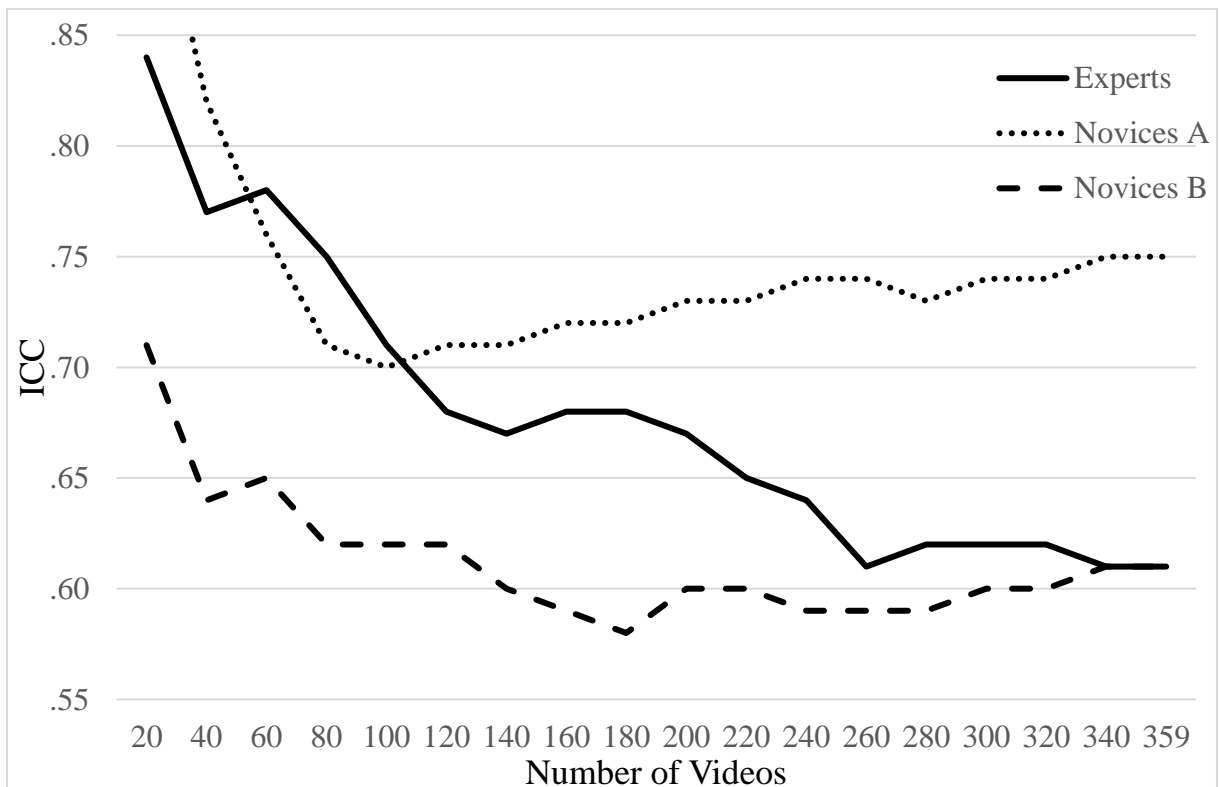
Note. Intraclass correlation coefficients and 95% confident intervals based on mean ratings (*k* = 2), absolute agreement, 2-way random effects model (ICC_(2,2)). CTS = Cognitive Therapy Scale. CCSS-S = Clinical Communication Skills Scale – Short Form. HAQ = Helping Alliance Questionnaire. ES = Empathy Scale.

Supplement 2

Development of IRR for the CCSS based on the Number of Rated Videos



Development of IRR for the HAQ based on the Number of Rated Videos



Development of IRR for the ES based on the Number of Rated Videos

